

BAHAMA®

C4sun sails



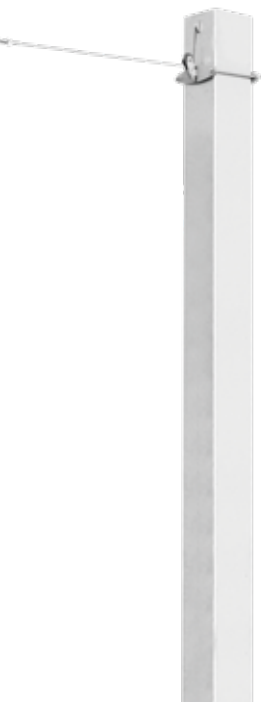


Bahama | C4sun

Founded in 1950, Bahama designs and manufactures high-quality, versatile large-size parasols. 2018 saw the company take over the C4sun sail product line, which was established back in 2011.

Every stage of the Bahama production process takes place in Germany, with almost all components for large-size parasols and sun sails drawn from in-house production. In addition, Bahama uses sustainable and environmentally-friendly textiles. This blend of high material standards and excellent design quality ensures that Bahama products offer outstanding wind stability.

Most important of all, our customer service caters to your every need – from consulting and installation through to cleaning, winter storage, and maintenance.





C4sun HIGH-END sun sails

C4sun is a technically sophisticated and highly aesthetic product that opens the door to truly individual design. Each of these exclusive and unique products is tailored precisely to the desired dimensions and made by hand at Bahama's dedicated facility in Germany.

The C4sun sails are the world's first fully automatic roll-up shading protection system featuring an arched roof. This arching generates an unrivaled sense of space that helps all guests truly relax. These wonderfully eye-catching sails combine remarkable design with outstanding functionality and maximum comfort. The latest tube motor technologies, in connection with smart controls and safety made by Somfy, complete the sails for the highest demands. Thanks to the customized sizing, C4sun enables precision adjustments down to the last centimeter and ensures that each individual shade is a perfect standalone product. In this way, the sail, mast, and motor combine to deliver the perfect result.

The Heart of it All

Two different C4sun model designs are available, each featuring a unique appearance and sense of space. High-quality masts made from stainless steel or aluminum add the finishing touch.

- ▀ 2 different designs:
elips (2 basic models) and square (3 basic models)
- ▀ Sail sizes up to max. 106 m²
- ▀ Fully automated operation via remote control and app
- ▀ Unique sense of space due to arched roof design
- ▀ Tailored solution for representative outdoor areas
- ▀ Wind pressure relief system through internal weights or dampers
- ▀ 4 different masts with oval, round and square cross-sections
- ▀ Excellent UV protection | UPF50+
- ▀ High waterproofness

Sail above the competition.

Product Information

1 Sail Material

WeatherMAX 80

The ultimate eye-catching feature of any sail system is of course the canvas. C4sun uses the sail material WeatherMAX 80, a technically sophisticated fiber that is suitable for sun and rain protection alike. At Bahama, the canvas cut is created individually and on a project-specific basis. The basic production of the cloths takes place in cooperation with one of the leading sail manufacturers in Germany that incorporates state-of-the-art manufacturing technology.



20 contemporary colors | Special colors by request

Waterproof, yarn-dyed polyester fabric

Grammage of approx. 270 g/m²

High color brilliance and color fastness

Excellent anti-glare and UV protection | UPF50+, protection against harmful UV radiation

Breathable design prevents heat built-up and condensation

Highly waterproof

Very high resistance to tears and kinks

Subtle rib structure for elegant look

2 Sail Models

Striking outlines and stunning forms make the difference in matters of design, with the contours of the sail dictating the appearance of the entire system. Bahama provides the elips4sun and square4sun product lines, each of which offers its own benefits and special features to suit individual needs. Besides design, users can focus on maximum surface coverage, space saving, the number of masts, or their own personal tastes – all with the goal of generating a unique, customized, feel-good atmosphere whatever the weather.

Every conventional form of sun protection, such as an awning, must be installed with a sufficient inclination to drain away any rainwater. In contrast, the inclination-free C4sun sails feature a fantastic fully-horizontal design.

The special aluminum profiles, which are developed in-house at Bahama, allow for each sail to arch up on its own. When retracting the sail structure the profiles lay flat around the roller tube - a space-saving solution. The C4sun sails were mainly developed to protect against harmful sunrays. Of course, they also defy light rain, most of which runs off to the side. However, the sail should be retracted in heavy rain and extreme weather conditions. The wiser gives way!

Elegant lines

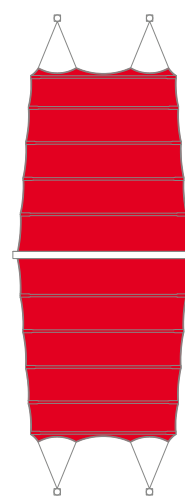
Innovative functionality

Three-dimensional convex arching toward the sky

Canvas rolls up flat when retracted

Pre-shaped pre-tension technology featuring aluminum profiles developed in-house

Every sail also available as double sail



Product Information

2 Sail Models



elips4sun

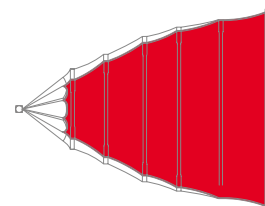
Four ropes and one mast

Ellipsoidal cut with curved sides

Organic design

Clew width: 1.8 m oder 2.7m

Max. canvas size
6.0 × 6.8 m

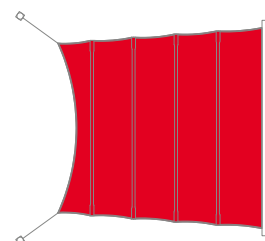


square4sun | CROSS

Two ropes, each with one mast

Large shaded area

Max. canvas size
6.8 × 7.0 m - 6.0 × 7.8 m

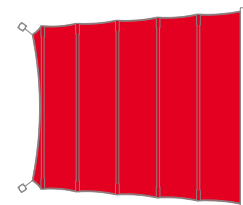


square4sun | CROSS PRO

Two ropes, each with one mast

Particularly suitable for roof terraces and smaller areas due to shortened ropes

Max. canvas size
6.8 × 7.0 m - 6.0 × 7.8 m

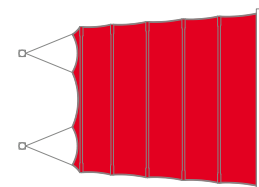


square4sun | LINE

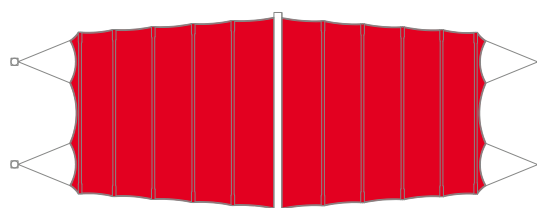
Four ropes with two masts

Large shaded area

Max. canvas size
6.8 × 7.8 m



All models can be installed as double sail



Product Information

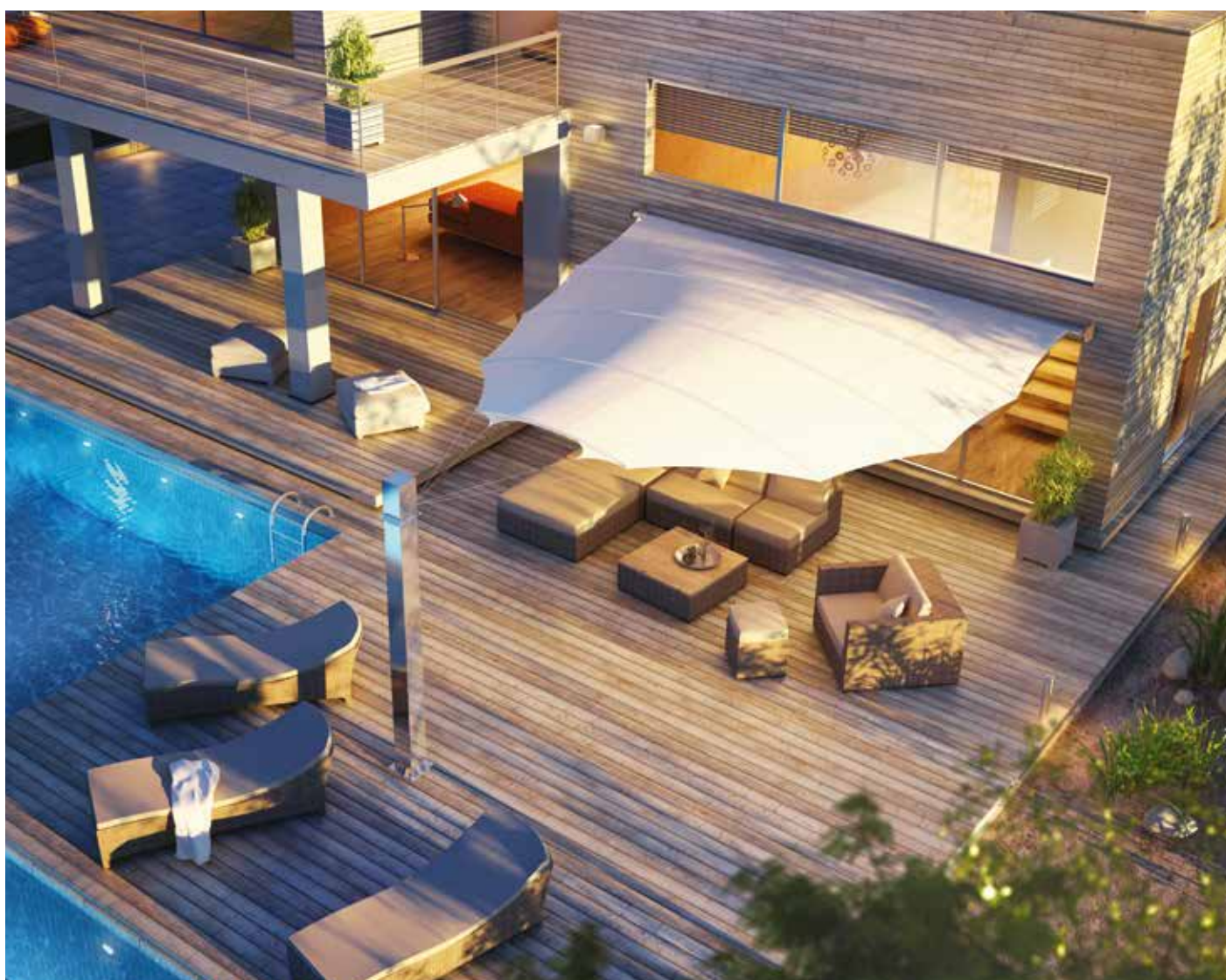
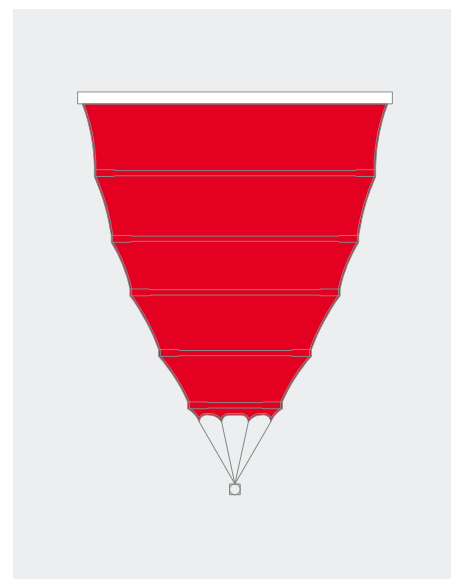
2.1 Model | elips4sun

This product line stands out on account of its organic design. The ellipsoidal cut catches the eye with its curved sides, which set the elips4sun apart from the uniform look shared by conventional triangular sail systems. Convex edges also ensure a wide canvas surface for even greater protection against the sun and rain. And as it features only one mast and four ropes, the sail system takes up as little space as possible while offering maximum freedom of movement in the shade.

The elips4sun has won two world-renowned awards – the Red Dot Award 2014: Best of the Best and the R+T Innovation Prize 2015: Special Design Prize



reddot award 2014
best of the best



Product Information

2.2 Model | square4sun

The square4sun product line is available in three basic variants featuring different mast positions and tensioning rope arrangements. This means that the sails can be tailored to suit the architecture and requirements of the installation site while also matching the personal tastes of users. Thanks to their large cloth surface, the square sails provide far more shade, protection, and individual flair than conventional products.

square4sun | CROSS

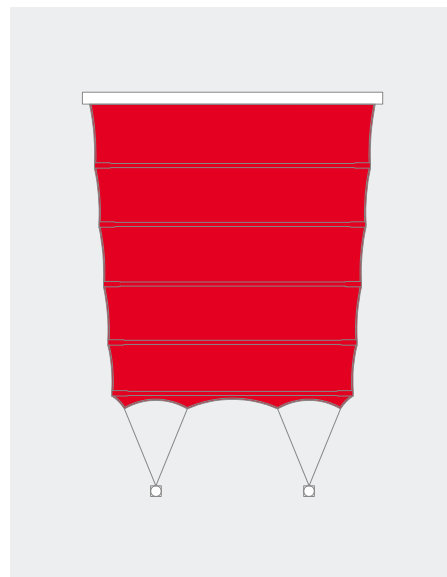
The masts of this sail type are positioned with a slight diagonal offset. This ensures a stable canvas surface while maintaining an unobstructed view. The mast can also be set up further away from the sail, with longer ropes being used to bridge the extra distance.

square4sun | CROSS PRO

This variant enables the mast and sail to be positioned directly alongside one another, making it particularly suitable for roof terraces and other terraces with limited space. As with all other sails, it can also be installed as a double sail (see photo below).

square4sun | LINE

In this variant, the masts are positioned in front of the sail surface. The shape generated by the four ropes guarantees maximum effectiveness for the convex sail design (refer to illustration on the right) while also achieving even greater wind stability.





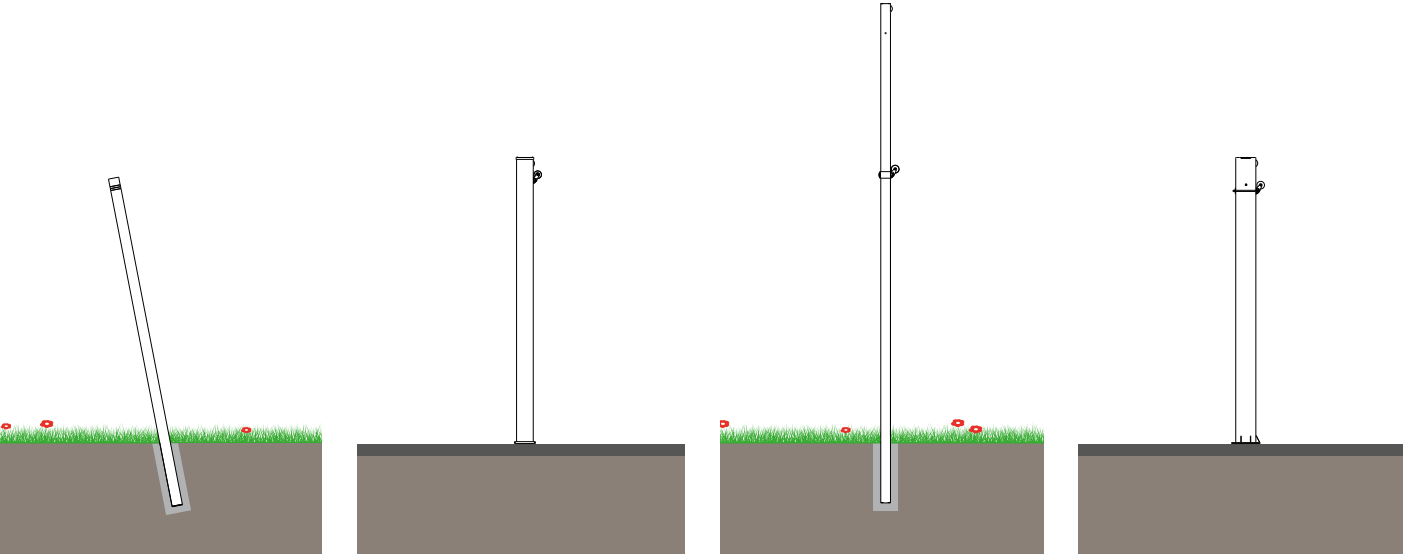
Product Information

3 Mast Models

Four masts made from high-quality, elegant stainless steel or aluminum complete the look of the sail system, forming a perfect harmony with the timeless design of the sail. A specially developed wind pressure relief system inside the mast enables a calm response to higher wind speeds. An internal weight or an internal damper takes care of the necessary balance. Superlative special components such as pulleys positioned on slide bearings prevent this complex mechanism from generating any unpleasant noises, even in the case of high winds. Each design can be combined with any of the C4sun sail masts (exception: elips4sun is not compatible with ID 110 and IG 101).



- Robust V2A stainless steel or aluminum profile
- 4 mm rope thickness
- Optimal wind pressure relief through internal dampers or internal weights
- Height-adjustable anchor point | Vertical or with 11° inclination
- 3,000 - 5,850 mm height
- Installation angle: 0° to 90°
- Low maintenance



ID 110 ROUND

Wind pressure relief via gas-pressurized springs

Powder-coated aluminum

ID 175 OVAL

Wind pressure relief via gas-pressurized springs

Powder-coated aluminum

IG 101 ROUND

Wind pressure relief via internally guided weights

V2A stainless steel

IG 211 SQUARE

Wind pressure relief via internally guided weights

V2A stainless steel

Special features ID 175

0° – 90° installation angle

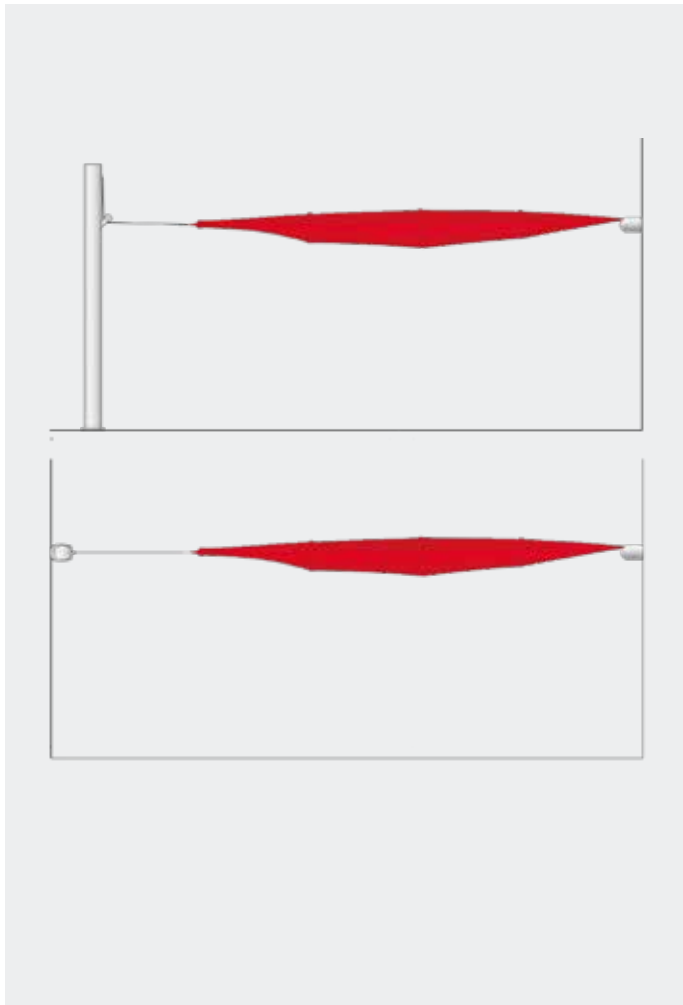
Suitable for installation at all inclinations without any restrictions. Intelligent wind pressure relief even enables horizontal wall-mounted installations with the help of wall clamps.

The standard editions are powder-coated in a textured matte finish, optionally in white aluminum | similar to RAL 9006 or anthracite grey | similar to RAL 7016. A custom RAL finish of the ID 175 is also possible.

Optional height adjustability:

Crank-operated internal height adjustment

Vertical adjustability of 2,000 mm starting at mast head. (Adjustability limited to 1,400 mm for sails starting at a length of 6,500 mm)



Dimensions | Masts

All dimensions are approximate

| | Mast Dimensions in mm | Installation Angle | Mast Height in mm |
|--------|-----------------------|-----------------------|-------------------------------|
| ID 110 | ø 110 | 79° 11° inclination | 3.623 |
| ID 175 | 75 – 105 × 175 | 0° – 90° | 3,000 / 3,500 / 4,000 / 4,500 |
| IG 101 | ø 101,6 | 90° Vertical | 5,240 / 5,850 |
| IG 211 | 211 × 211 | 90° Vertical | 3,000 / 3,500 |

Product Information

4 Motor | Drive | Control and Safety

The sail is driven by a tube motor located inside the roller tube, which can be operated in a number of different ways. First, it can be operated using advanced, secure io-homecontrol® wireless technology featuring a universal communication protocol. This enables all components to communicate with one another, leaving users free to control all comfort and safety elements via a single unit. It is even possible to control and monitor the system using a smartphone. Secondly, the sail can be extended and retracted using a wired controller or a remote control. Alternatively, these functions can be integrated into an on-site KNX (bus) controller.

The power package is another drive variant in which the reinforced drive is provided by two tube motors. This option is recommended for larger sail surfaces and locations featuring high wind speeds. Please note that with certain sail sizes two motors are included as standard equipment.



Somfy io system

Sunea 60 io 120/12 tube motor

Remote controlled

Somfy LT system

LT 60 Taurus 120/12 tube motor

Wired

On-site KNX (bus) control possible

Somfy RTS system

Altus 60 RTS 120/17 tube motor

Export only – country-specific regulations

Power package

Available in various designs

Featuring two tube motors

Internal or external junction box

Handheld transmitter or KNX (bus) controller

OPTIONAL

Wall-mounted transmitter, wind and/or sun monitor, individual motor controller, etc.

5 Installation Options | Mounting components

5.1 Roller Tube

C4sun offers several mounting options: The roller tube can be mounted onto building walls or under roof overhangs. Alternatively, assembly with a free-standing roller tube mount is also possible. The free-standing edition works equally well with single and double sail systems.

If necessary, an individual installation concept can also be developed.

For single-sail systems

Roller tube bracket on building wall or underneath roof overhang

Free-standing roller tube mount

For double-sail systems

Free-standing roller tube mount



5.2 Mast

Every subsurface is unique, with conditions sometimes varying even within a single surface requiring shade. Practical installation elements are available for each mast to resolve such issues. If that is not the case, users can request an individually-tailored installation concept or freely combine existing mounting elements.

Installation elements

Krinner screw foundation | For installation masts **I**

Wall brackets

Mast console

Flange plate

C4sun Cube **II**



Additional Features

1 Protective Cover

The impregnated, waterproof material protects the furled sail especially in winter or during a longer period of non-use.

- Made of WeatherMAX 80 | color: Graphite 94
- With velcro fastening

2 V4A extra protection | Maritime

V4A has been developed for locations that are near to the coast or highly susceptible to weathering. This corrosion-resistant steel alloy provides the surface with added resistance to the elements.

- For all masts
- For free-standing roller tube mount



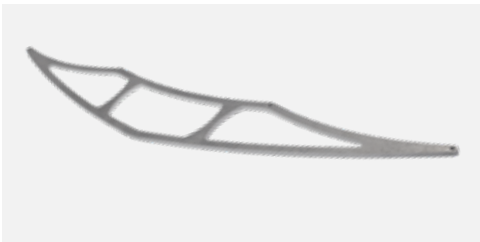
3 Radiators

The radiators uses infrared radiation to ensure pleasant temperatures with no lead time. This additional heat is directed toward the persons seated below, meaning that cold temperatures no longer act as a deterrent to sitting outside.

- 1.500 watts, IP65
- Infrared radiators
- With wall bracket



4 Clew Shortening



- For elips4sun model
- Reduction of the minimum mast clearance
- Powder-coated aluminum

Good to Know

Made in Germany

Each sun sail is tailored precisely to the desired dimensions and assembled by hand to form a fantastic high-resistance system – made in Germany.

Service

The Bahama team is on hand to provide comprehensive assistance, wherever you are and whatever you need.

Precise customized planning

Creation of technical drawings and installation instructions

Setup

Installation and maintenance of sail systems by retail partners

UV Protection

The WeatherMAX 80 sail material meets the requirements of UPF50+, the excellent possible ultraviolet protection factor. UPF refers to the inherent level of protection provided by textiles against harmful UV rays.

Wind Stability

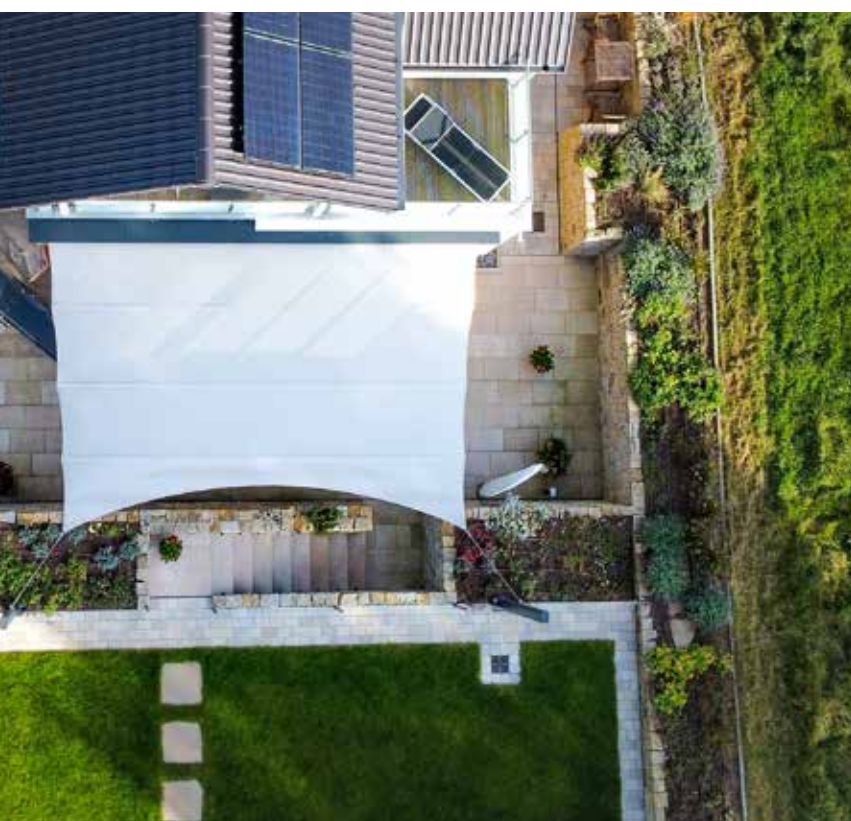
C4sun sails feature very high levels of wind stability and safety thanks to their special relief mechanisms in the event of wind pressure. These neutralize the power of the wind by significantly reducing the exposed area, meaning you can continue to enjoy your sail long after conventional systems have been retracted.

Award-Winning Design

The elips4sun product line has won two world-renowned awards – the Red Dot Award 2014: Best of the Best and the R+T Innovation Prize 2015: Special Design Prize..

















01/2024 | Note: Subject to change without notice

BAHAMA®